



0.75kW-7.5kW



9.2kW-55kW

Application

- Circulation and transfer of clean, chemically non-aggressive water and other liquids
- Water supply & irrigation
- Water circulation in air conditioning systems
- Fire fighting system

Operating Conditions

- Delivery: up to 210 m³/h
- Head: up to 95 m
- Liquid temperature: Standard -10°C to 85°C
- Maximum operating pressure: 12 bar (PN12)
- Anti-clockwise rotation when facing pump's suction port
- Impeller: AISI304 , HT200
- Mechanical seal in compliance with DIN 24960
- Lubricated by internal recirculating pumped liquid
- Counter flange available on request

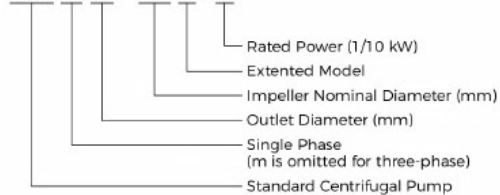
Motor

- Closed construction, external ventilation
- Insulation class: F
- Protection class: IP54
- Performance in compliance with CEI 2-3 (IEC 34.1)
- Max.ambient temperature: +40°C
- Overload protection
- For model that ≥9.2kw: Equipped with IE2 motor, IE3 motor available on request.

For model that ≤7.5kw, the following 4 models can be equipped with IE3 motor. (XST40-160/30, XST40-160/40, XST50-160/55, XST50-160/75)

Identification Codes

XST m 32 - 125 K / 11

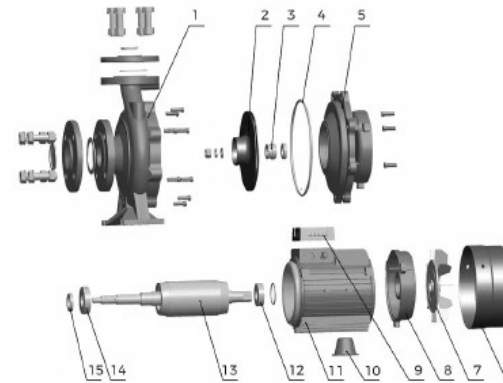


Construction Features

- Single- impeller centrifugal pump featuring axial intake and radial discharge
- Inlet and outlet DN in compliance with EN 733 (ex DIN 24255) and UNI 7467
- Flanges in compliance with UNI 2236 and DIN 2532
Rear entry (impeller, motor can be extracted without disconnecting the pump body from the pipes)

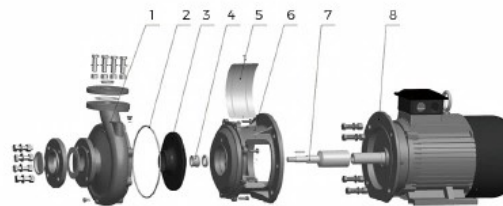
Materials Table

Exploded diagram of 7.5 kW and below



No.	Part	Material
1	Pump body	HT200
2	Impeller	HT200 / 06Cr19Ni10
3	Mechanical seal	
4	O-ring	NBR
5	Connection body	HT200
6	Wind cover	08F
7	Fan	PP
8	Back cover	ZL102
9	Cover box	ABS
10	Brace	HT200
11	Stator	
12	Bearing	
13	Rotor	
14	Bearing	
15	Skeleton seal	

Exploded diagram above 7.5 kW



No.	Part	Material
1	Pump body	HT200
2	O-ring	NBR
3	Impeller	HT200 / 06Cr19Ni10
4	Machinery Seal	
5	Guard plate	06Cr19Ni10
6	Connection body	HT200
7	Pump shaft	45/06Cr19Ni10
8	Motor	

Performance Parameter

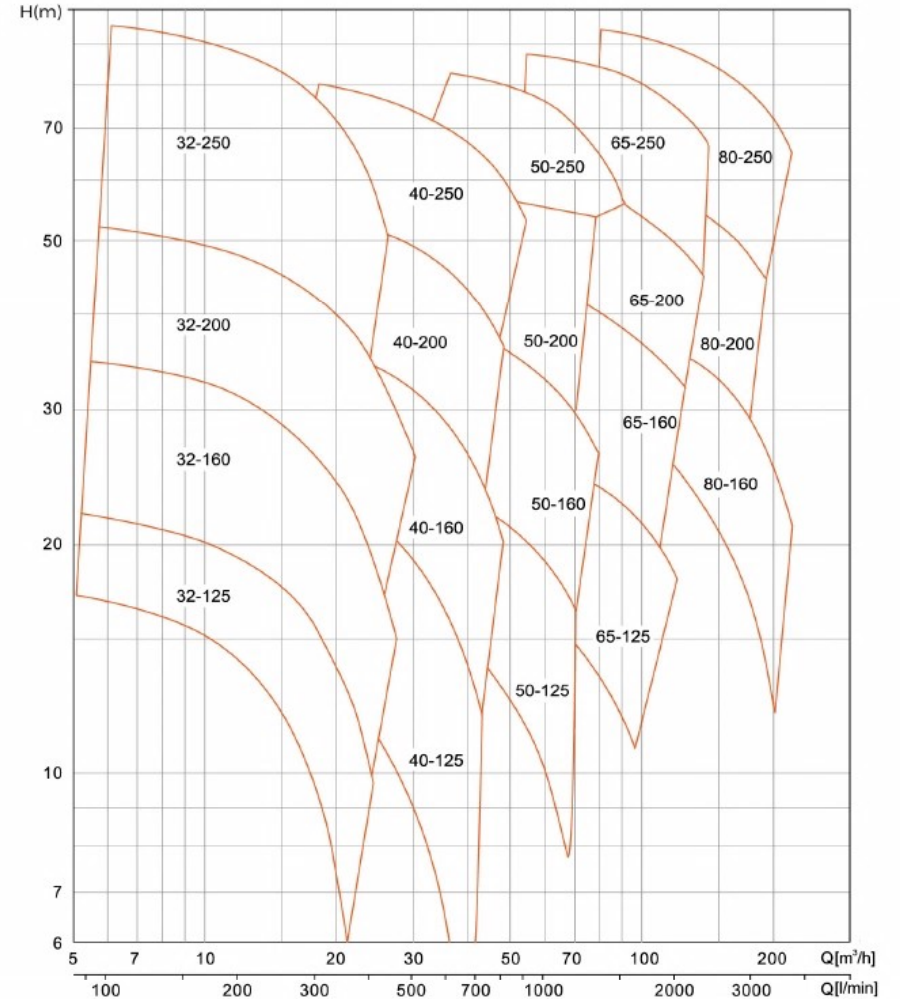
Model	Power		Q(m³/h)	H (m)																		
	kW	HP		0	6	9	15	18	24	27	36	42	48	54	72	84	90	108	120	138	180	210
			Q(l/min)	0	100	150	250	300	400	450	600	700	800	900	1200	1400	1500	1800	2000	2300	3000	3500
32-125/7*	0.75	1	17.5	16.7	15	12	9															
32-125/11*	1.1	1.5	22	21	20.2	17	15	9														
32-160/15*	1.5	2	24	23.7	22.5	19.5	16.2															
32-160/22*	2.2	3	31	29.6	29	25.5	22.5	15														
32-160/30*	3	4	34.5	33.5	33	29	26.5	20	16.5													
32-200/30*	3	4	43.2	42	40.5	35.2	32.2	24.6	19.8													
32-200/40*	4	5.5	52	50.5	50	45	41.9	35	30.3													
32-250/55**	5.5	7.5	79	74.7	71.8	63	56	37.5														
32-250/75**	7.5	10	95	92	89	82	75	57.8	48													
40-125/11	1.1	1.5	14.7				13	11.5	10.1													
40-125/15	1.5	2	18.1				17	15	13.9													
40-125/22	2.2	3	24.5				23.2	21.5	20.2	16	12											
40-160/30	3	4	31.8				29	27.5	26.3	21.5	17.5											
40-160/40	4	5.5	38				36	34	33	28.5	25	20.1										
40-200/55*	5.5	7.5	44				42	40	38	32	27											
40-200/75*	7.5	10	55				52	49	48	42	37	32										
40-250/92*	9.2	12.5	64				59	56.5	55	49.5	45	39.8										
40-250/110*	11	15	72				67.5	65	63.5	57.5	52.2	47										
40-250/150*	15	20	82				79	77.3	76.5	71	66	60.5	54.8									
50-125/22	2.2	3	17							15.4	14	12.8	11.5									
50-125/30	3	4	20							18.8	18	17	15.6									
50-125/40	4	5.5	24							23.1	22.6	21.5	20.3	15.8								
50-160/55	5.5	7.5	32							30.6	30	28	26.6	20.5								
50-160/75	7.5	10	40							38	37	36	34.4	29								
50-200/92*	9.2	12.5	50.5							46.8	45	43	40.9	32.5								
50-200/110*	11	15	57.5							53.5	52	50	47.5	40								
50-250/150*	15	20	68.5							64	63	61.5	59	50	41							
50-250/185*	18.5	25	77							73.2	72	70	68	60.5	51.5							
50-250/220*	22	30	86.3							83	81.5	80	78	70	61							
65-125/40	4	5.5	19								17.3	16.8	14.5	13	11.8							
65-125/55	5.5	7.5	23								21.3	20.9	19	17.5	16.7	13.7						
65-125/75	7.5	10	27								26	25.6	24.5	23	22.5	20	18					
65-160/92	9.2	12.5	33									31.5	30	28	27.1	24	21.5					
65-160/110	11	15	36									34.5	33	31.5	30.8	28	25.5					
65-160/150	15	20	42									41	40	38.5	37.8	35	33					
65-200/150	15	20	45.5									46	43.5	41	39.2	33						
65-200/185	18.5	25	53									53.5	51.2	48.3	47	41.5						
65-200/220	22	30	59									59.5	57.2	54	53	47	43.5					
65-200K/185	18.5	25	41.2										42	41.2	40.6	38.2	36.5	34				
65-200K/220	22	30	48										48	47.5	46	44	41					
65-200K/300	30	40	59.5										59	58.5	58	56.2	54					
65-250/220	22	30	62										61.5	58.2	56.5	54	49	45	36			
65-250/300	30	40	76										75	73	70	69	64	61	54			
65-250/370	37	50	90										88	86	84	82	78	74	68			
80-160/110	11	15	27										27.3	26	24.5	22.5	16					
80-160/150	15	20	32.8										32.5	31.3	30.2	28	22.1	16.7				
80-160/185	18.5	25	39										38	36.8	35.7	33.8	28.8	23.5				
80-200/220	22	30	48										47.5	46	43.5	41	32.5					
80-200/300	30	40	60										59.5	58	57	54.5	47					
80-250/370	37	50	71.5										70.5	67.5	65.5	61.5	49.5	38				
80-250/450	45	61	82										80.5	78.5	76.5	72	62	51				
80-250/550	55	75	95										93.5	91.2	89.8	86.8	77.6	68.3				

*-Stainless steel impeller

**-Two-stage stainless steel impeller

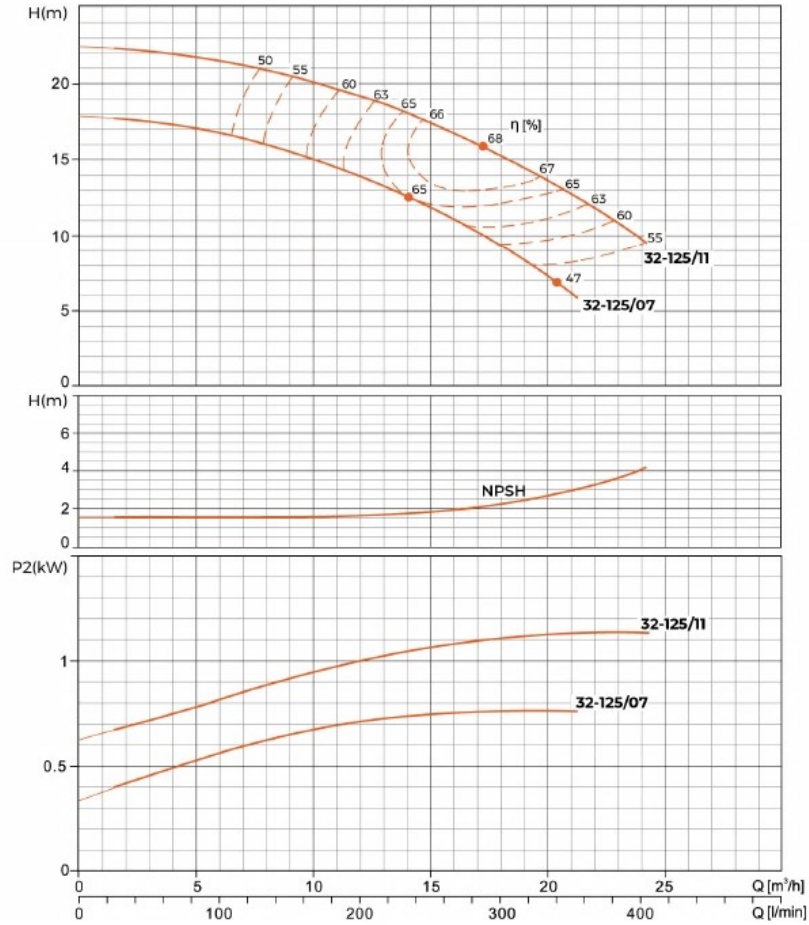
Characteristic Curves

XST	Rated speed: 2900r/min	ISO 9906 Annex A
-----	------------------------	------------------



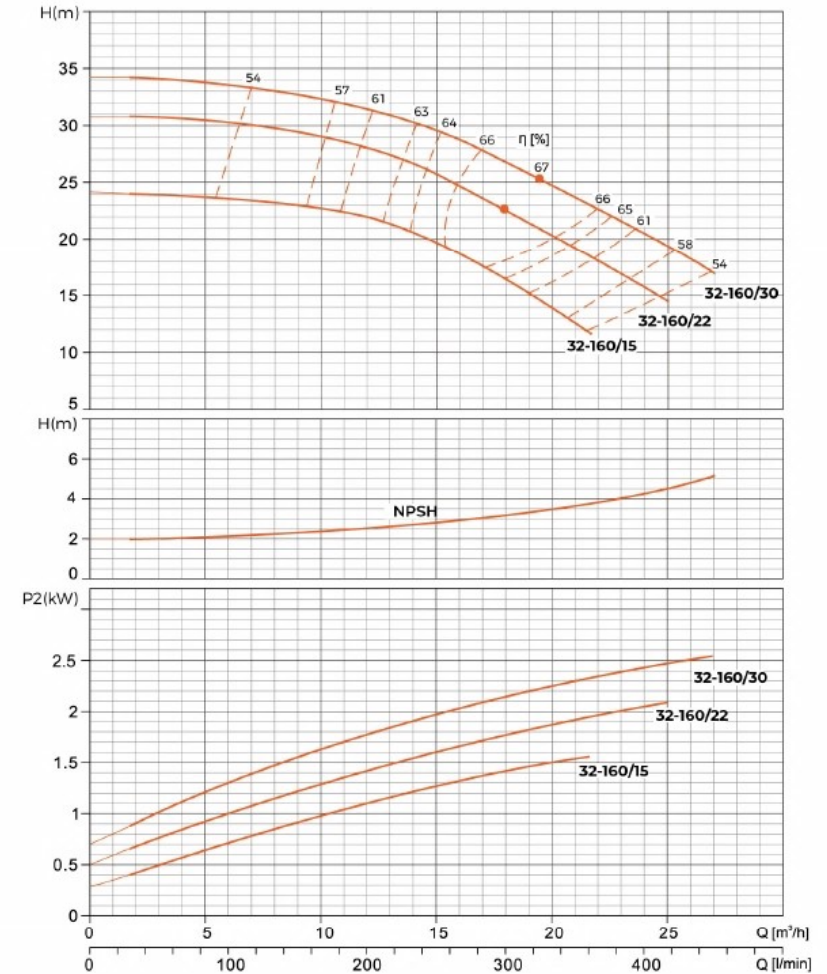
Hydraulic Performance Curves

XST32-125	Rated speed: 2900r/min	ISO 9906 Annex A
-----------	------------------------	------------------



Hydraulic Performance Curves

XST32-160	Rated speed: 2900r/min	ISO 9906 Annex A
-----------	------------------------	------------------

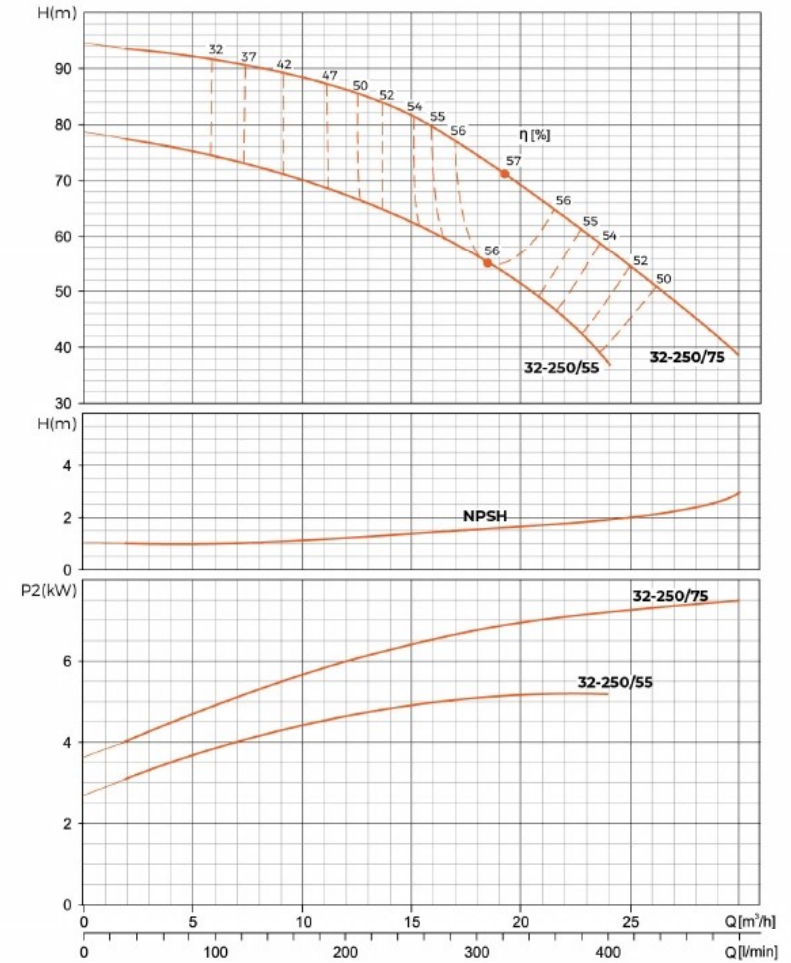
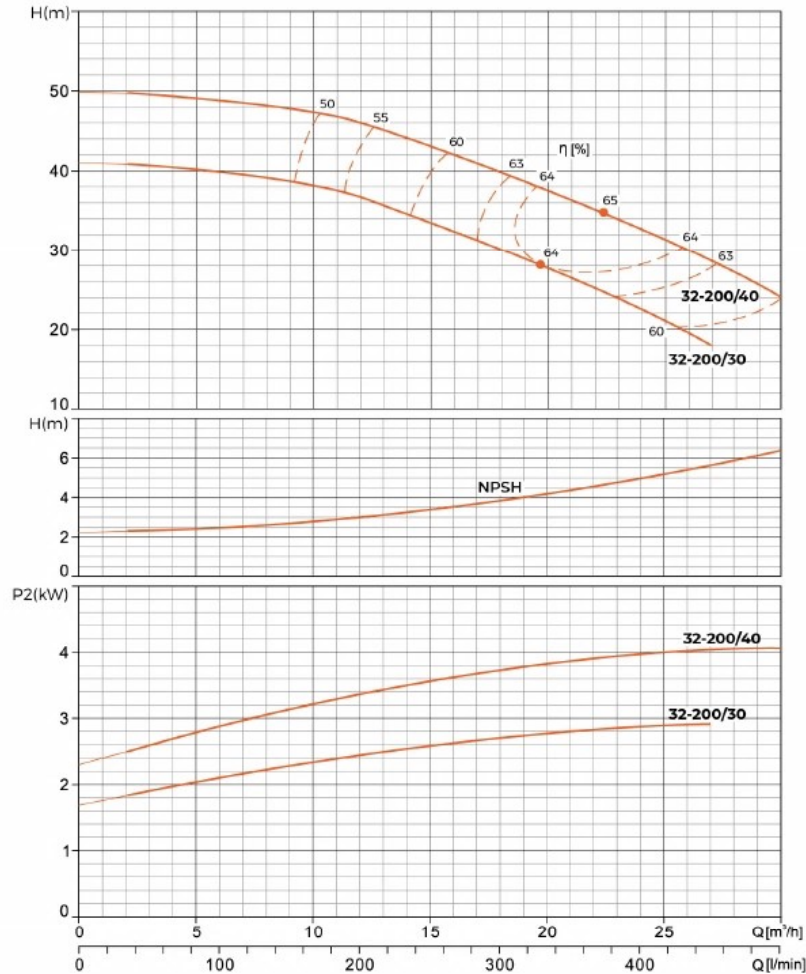


Hydraulic Performance Curves

XST32-200	Rated speed: 2900r/min	ISO 9906 Annex A
-----------	------------------------	------------------

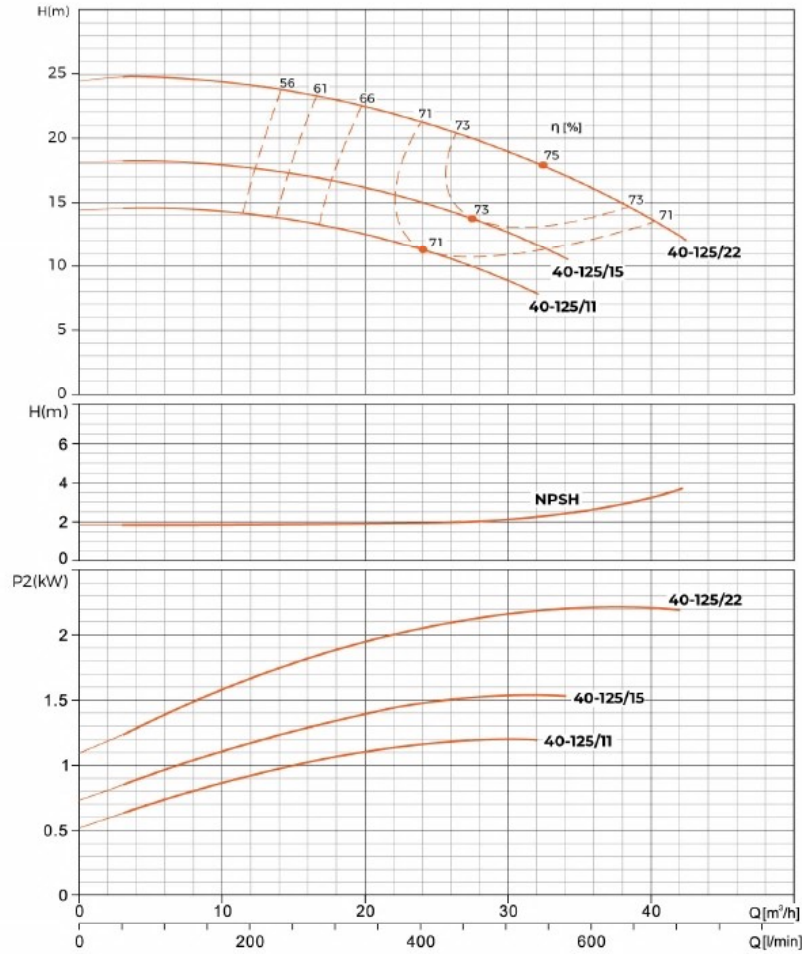
Hydraulic Performance Curves

XST32-250	Rated speed: 2900r/min	ISO 9906 Annex A
-----------	------------------------	------------------



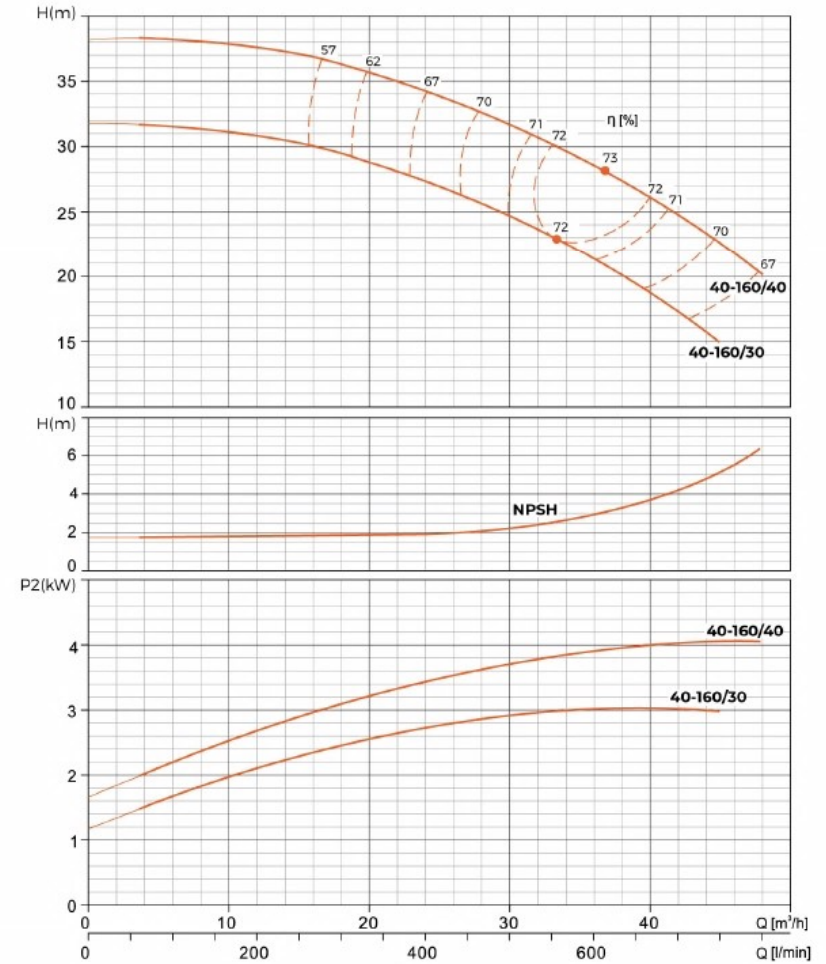
Hydraulic Performance Curves

XST40-125	Rated speed: 2900r/min	ISO 9906 Annex A
-----------	------------------------	------------------



Hydraulic Performance Curves

XST40-160	Rated speed: 2900r/min	ISO 9906 Annex A
-----------	------------------------	------------------

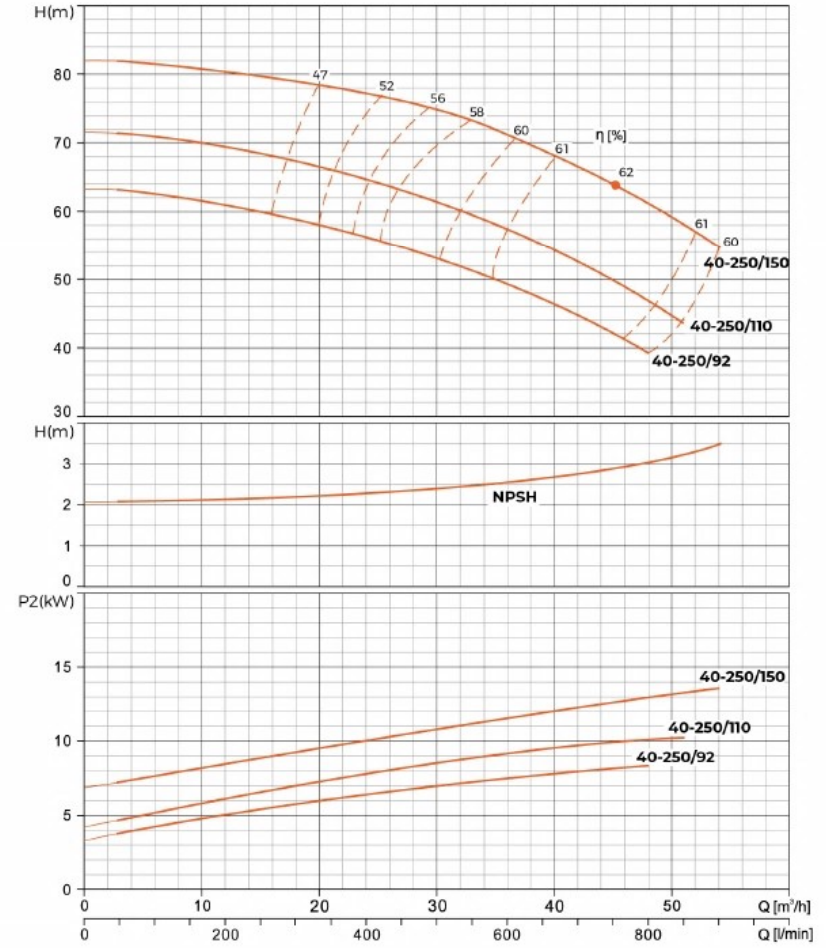
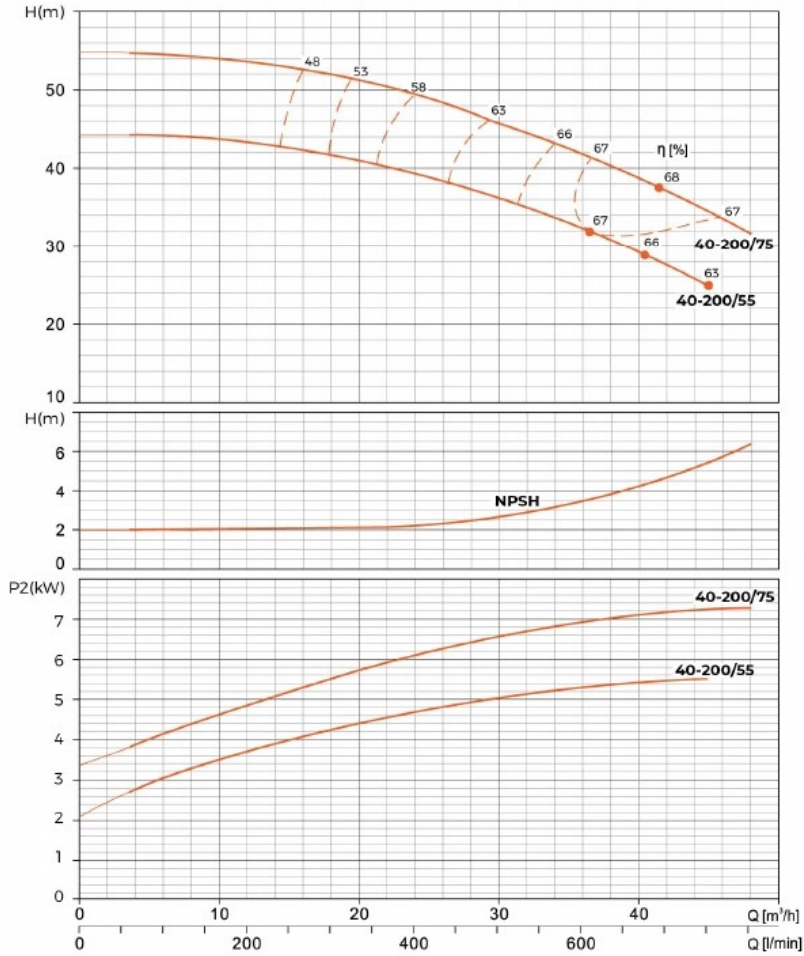


Hydraulic Performance Curves

XST40-200	Rated speed: 2900r/min	ISO 9906 Annex A
-----------	------------------------	------------------

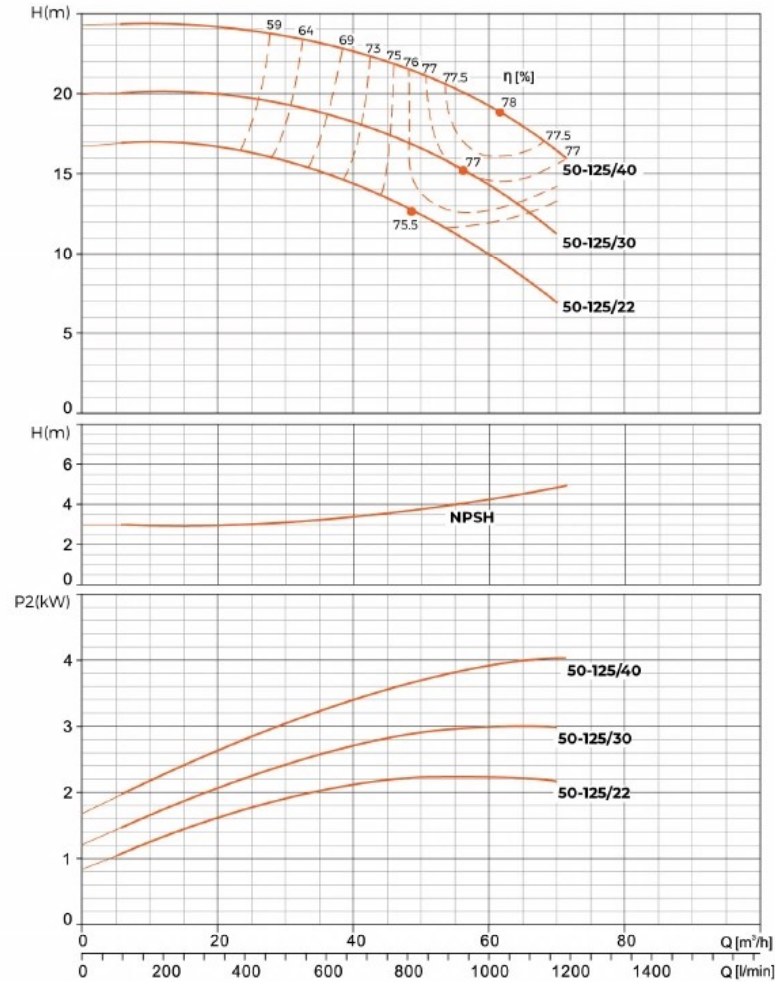
Hydraulic Performance Curves

XST40-250	Rated speed: 2900r/min	ISO 9906 Annex A
-----------	------------------------	------------------



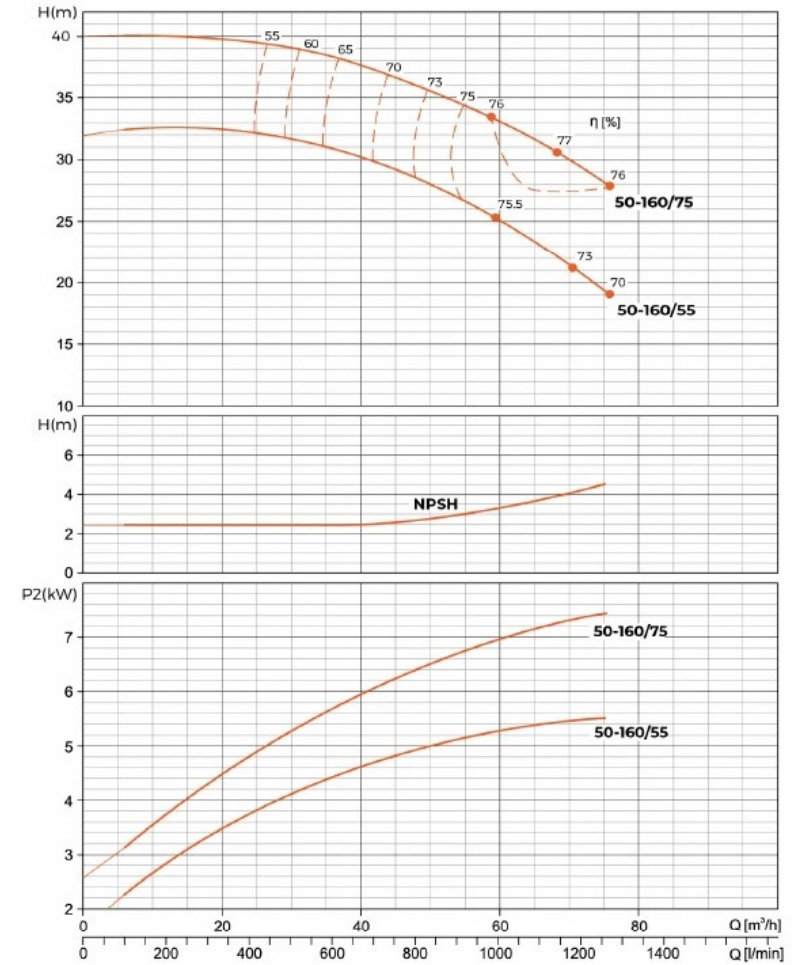
Hydraulic Performance Curves

XST50-125	Rated speed: 2900r/min	ISO 9906 Annex A
-----------	------------------------	------------------



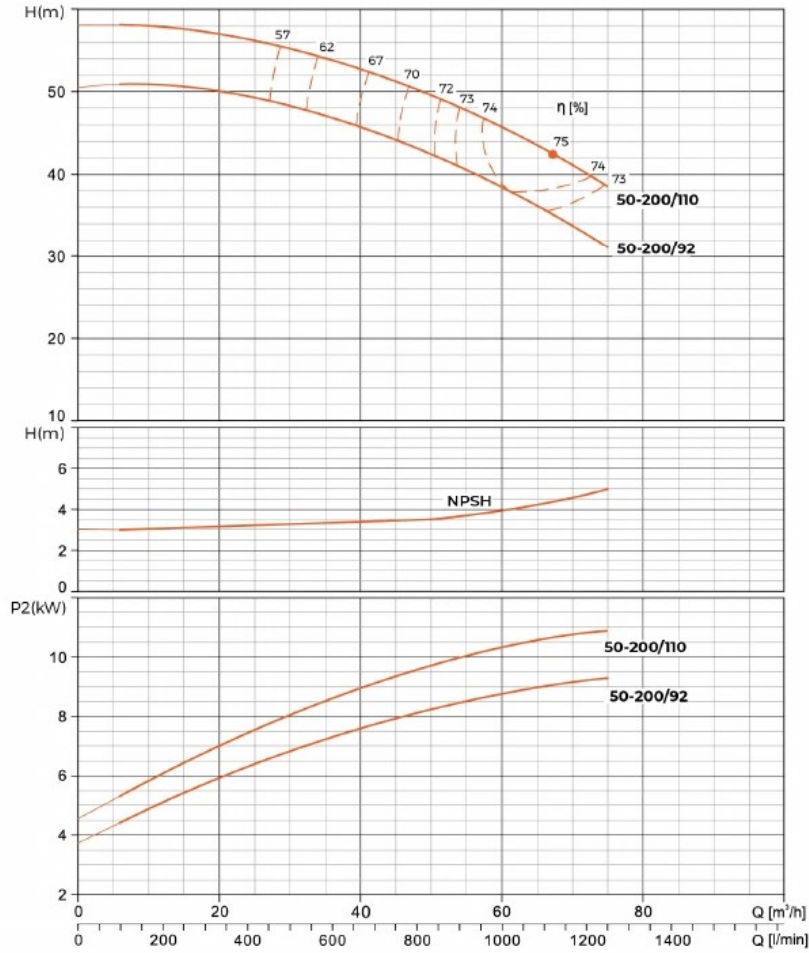
Hydraulic Performance Curves

XST50-160	Rated speed: 2900r/min	ISO 9906 Annex A
-----------	------------------------	------------------



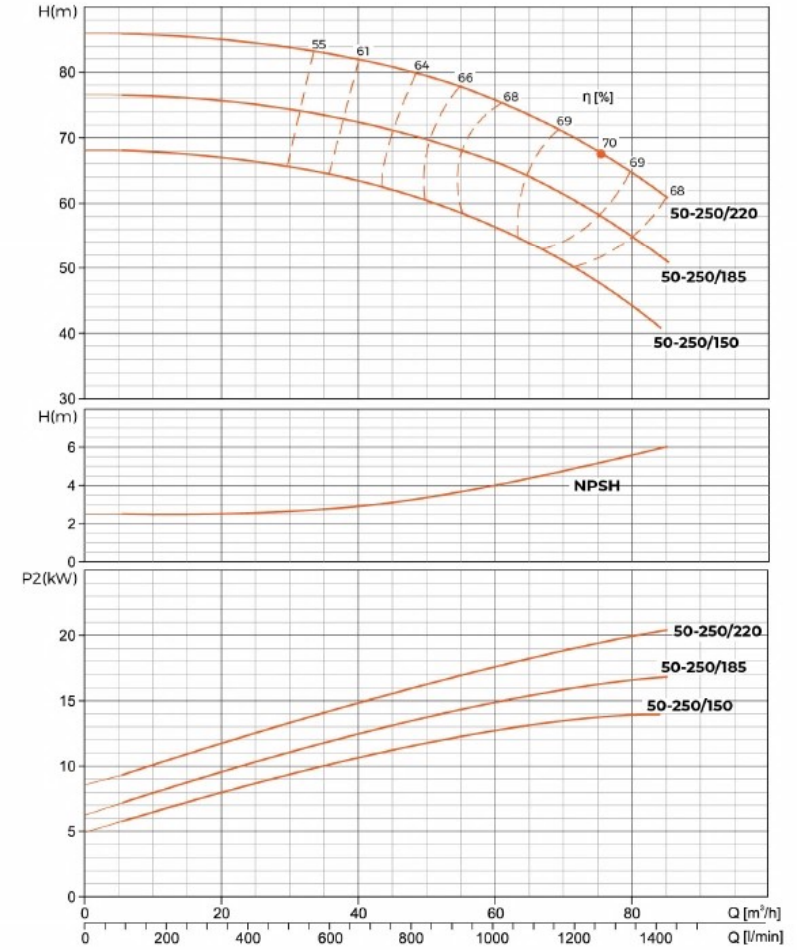
Hydraulic Performance Curves

XST50-200	Rated speed: 2900r/min	ISO 9906 Annex A
-----------	------------------------	------------------



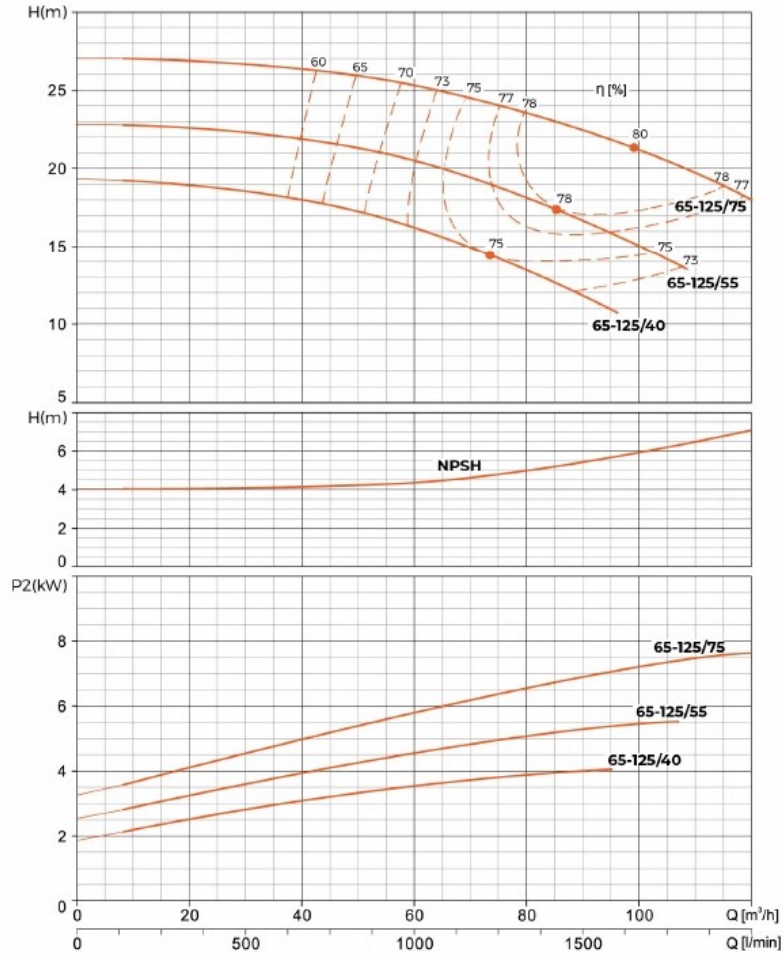
Hydraulic Performance Curves

XST50-250	Rated speed: 2900r/min	ISO 9906 Annex A
-----------	------------------------	------------------



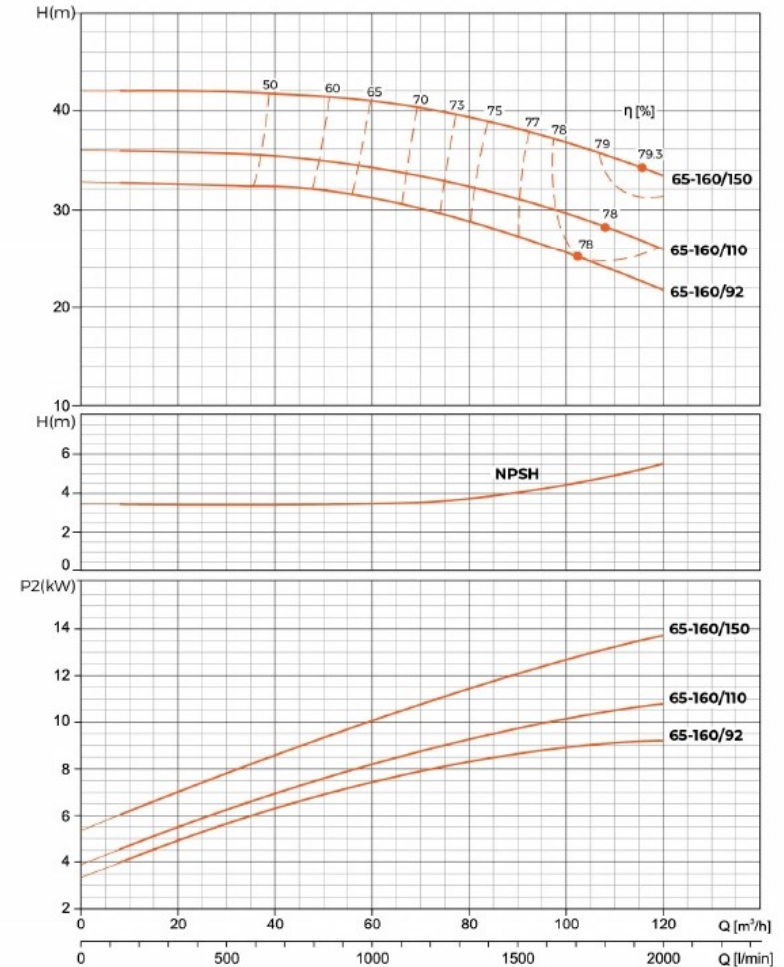
Hydraulic Performance Curves

XST65-125	Rated speed: 2900r/min	ISO 9906 Annex A
-----------	------------------------	------------------



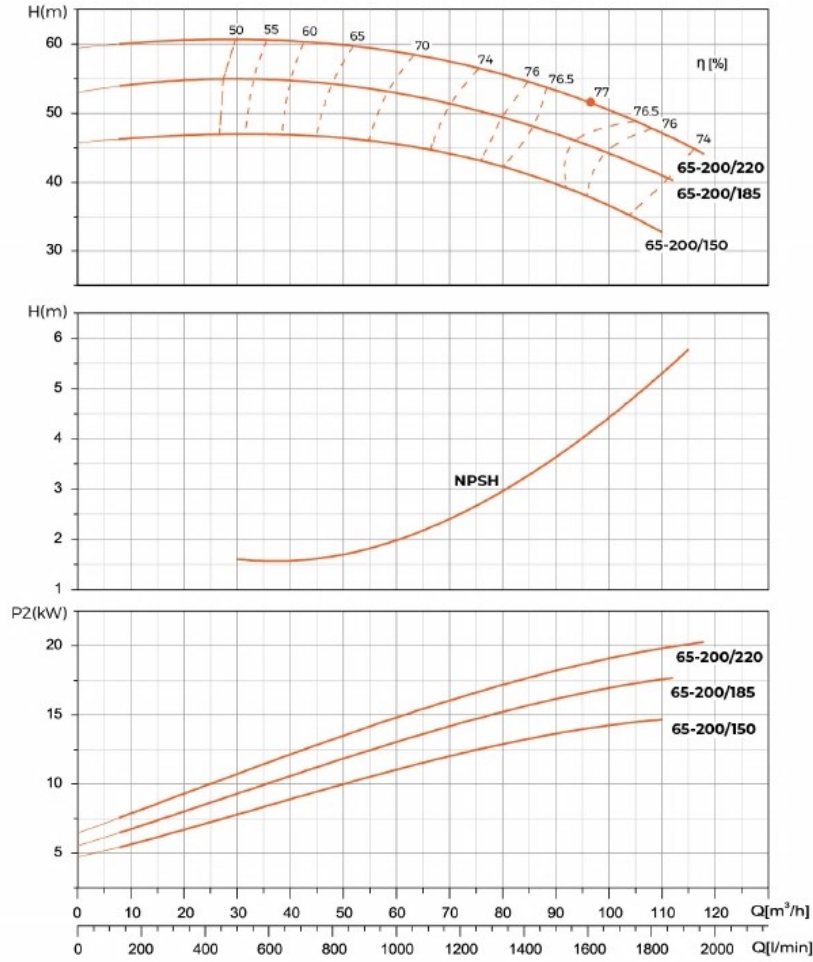
Hydraulic Performance Curves

XST65-160	Rated speed: 2900r/min	ISO 9906 Annex A
-----------	------------------------	------------------



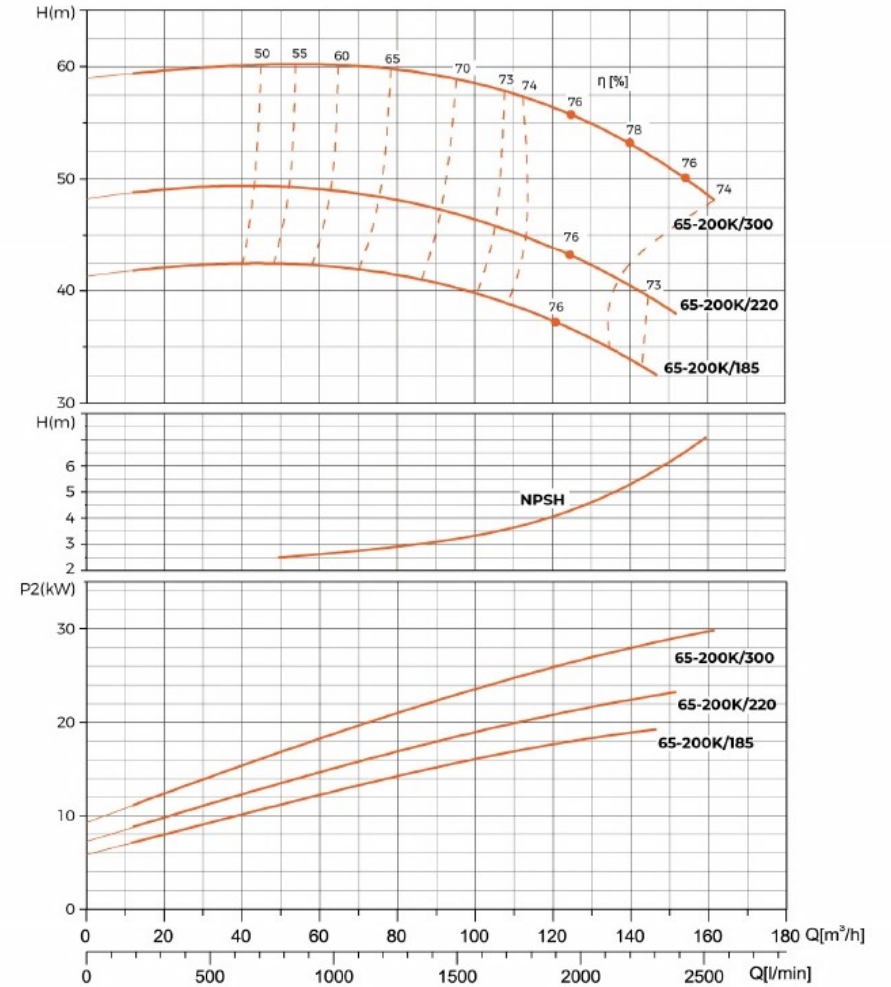
Hydraulic Performance Curves

XST65-200	Rated speed: 2900r/min	ISO 9906 Annex A
-----------	------------------------	------------------



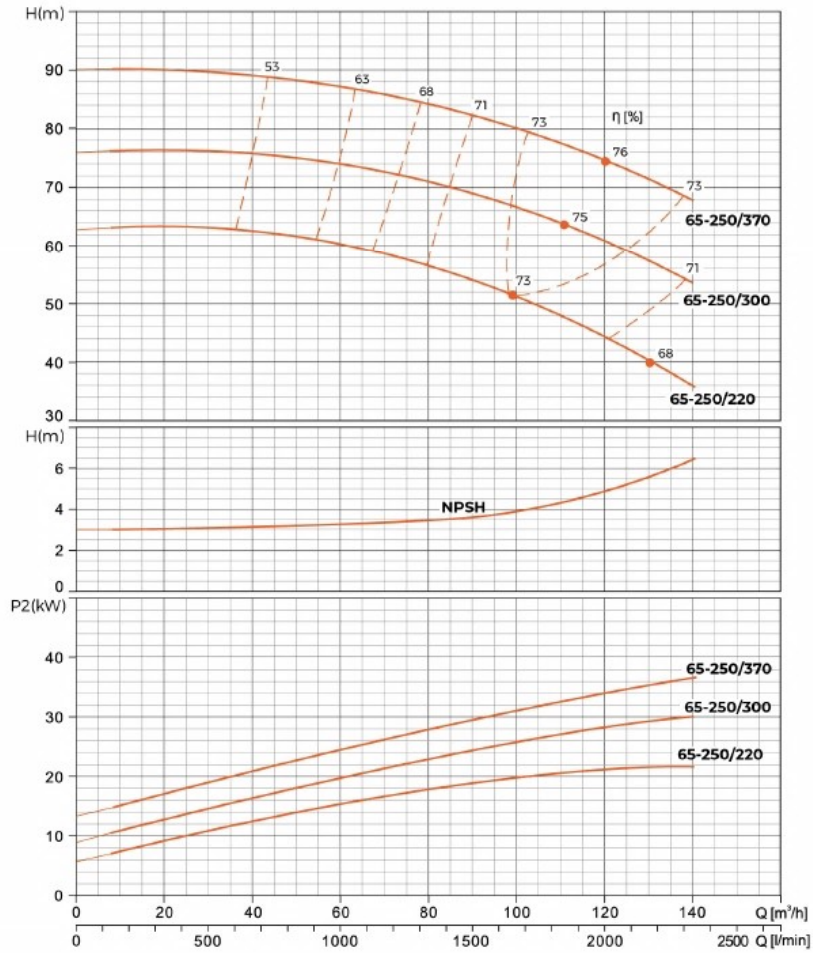
Hydraulic Performance Curves

XST65-200K	Rated speed: 2900r/min	ISO 9906 Annex A
------------	------------------------	------------------



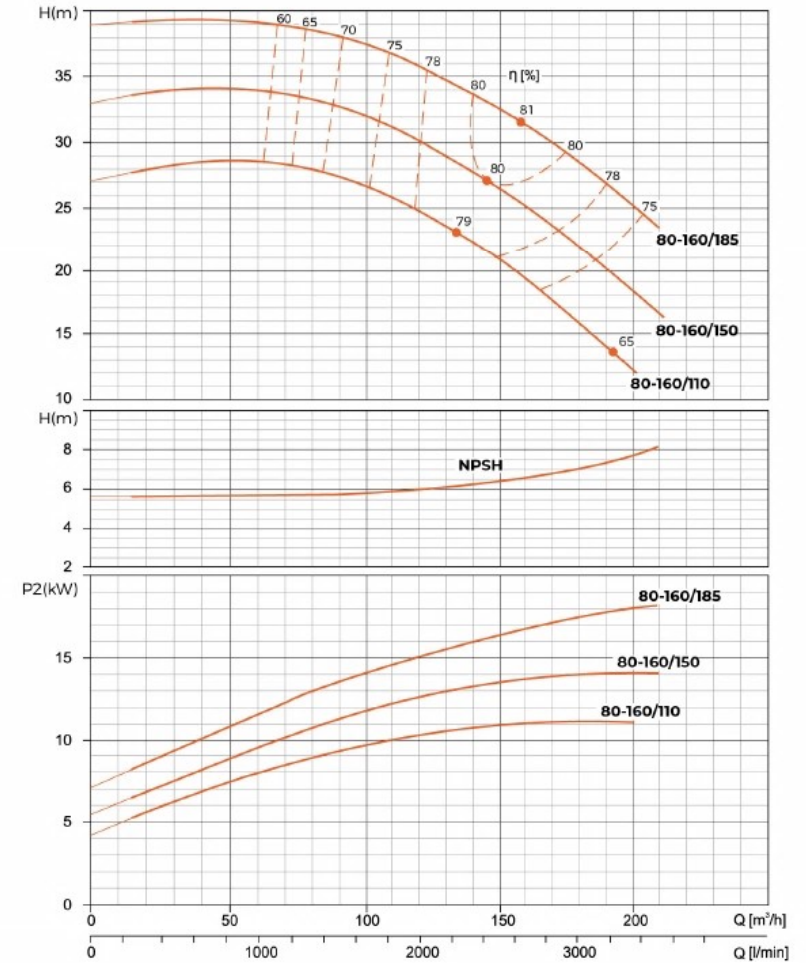
Hydraulic Performance Curves

XST65-250	Rated speed: 2900r/min	ISO 9906 Annex A
-----------	------------------------	------------------



Hydraulic Performance Curves

XST80-160	Rated speed: 2900r/min	ISO 9906 Annex A
-----------	------------------------	------------------

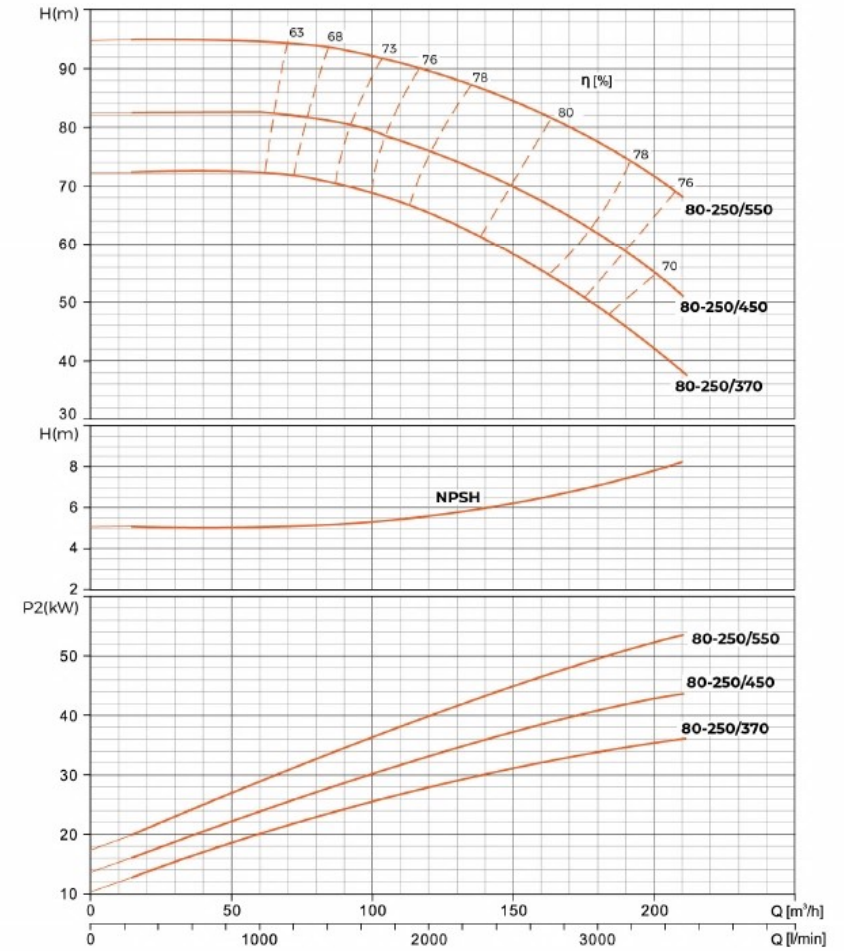
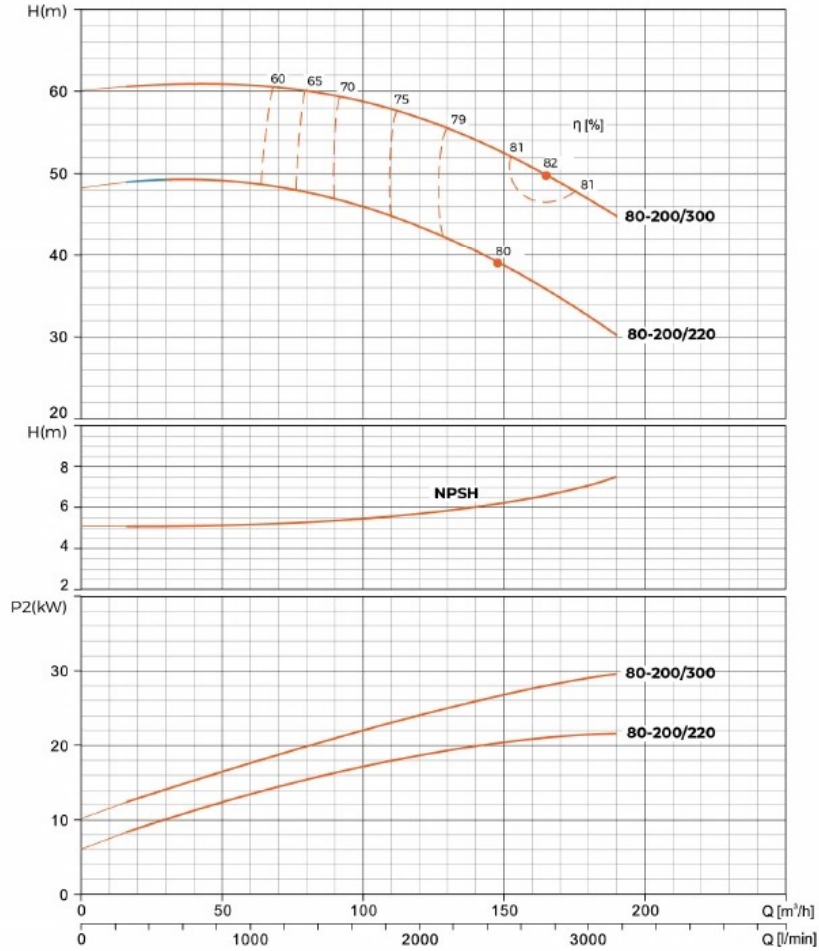


Hydraulic Performance Curves

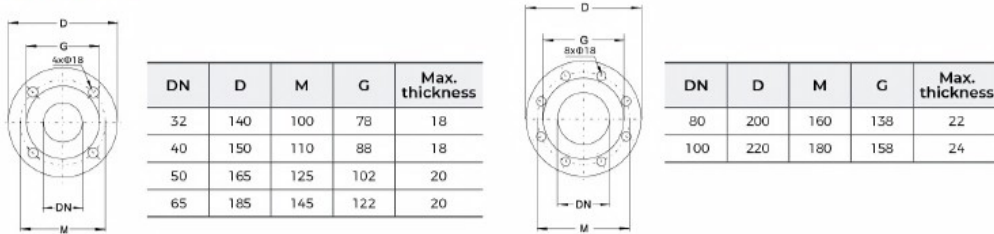
XST80-200	Rated speed: 2900r/min	ISO 9906 Annex A
-----------	------------------------	------------------

Hydraulic Performance Curves

XST80-250	Rated speed: 2900r/min	ISO 9906 Annex A
-----------	------------------------	------------------

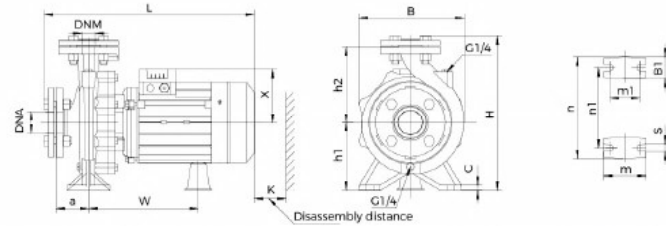


Flange Size



Outline Drawing and Outline Size

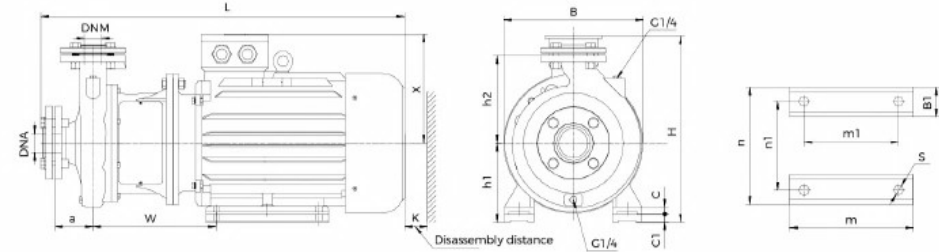
Less than or equal to 7.5 kW



Model	DNM	DNA	a	h2	w	x	B1	c	h1	m	m1	n	n1	s	B	H	L	K																																			
XST32-125/7	32	50	80	140	223	113	50	12	112	100	70	190	140	15	197	278	427	85																																			
XSTm32-125/7						123																																															
XST32-125/11						113																																															
XSTm32-125/11						123																																															
XST32-160/15						116																																															
XSTm32-160/15						123																																															
XST32-160/22			116	160	160	231	116	50	16	132	100	70	240	190	14	242	318	498	95																																		
XSTm32-160/22			141																																																		
XST32-160/30			130																																																		
XSTm32-160/30			141																																																		
XST32-200/30			180																	154	198	258	127	60	15	160	100	70	272	212	14	248	366	489	125																		
XST32-200/40			160																																																		
XST32-250/55	198	179	263	179	127	60	15	160	100	70	308	384	614	384	636	60																																					
XST32-250/75	141																																																				
XST40-125/11	40																65	80	140																	203	50	12	112	100	70	210	160	15	218	279	483	95					
XSTm40-125/11																																																	120				
XST40-125/15																				120																																	
XSTm40-125/15																				128																																	
XST40-125/22		130																																																			
XSTm40-125/22		141																																																			
XST40-160/30		100	180	168	127	127	52	12	132	100	70	240	190	15	249	327		491	105																																		
XST40-160/40																				160																																	
XST40-200/55																				179	179	258	179	127	52	12	132	100	70	264	212	15	275	367	559	110																	
XST40-200/75																				141																																	
XST50-125/22																				50																	65	100	180	258	179	127	127	52	12	132	100	70	15	249	327	491	110
XST50-125/30																																																					
XST50-125/40	141																																																				
XST50-125/50	127																																																				
XST50-160/55	179																																																				
XST50-160/75	141																																																				
XST65-125/40	65	80	180	276	179	68	14	160	125	95	280	212	15	282	371	577	120																																				
XST65-125/55																		567																																			
XST65-125/75																		589																																			
XST65-125/40																		577																																			
XST65-125/55																		600																																			
XST65-125/75																		600																																			

Outline Drawing and Outline Size

Greater than 7.5 kW



Model	DNM	DNA	a	h2	w	x	B1	C	C1	h1	m	m1	n	n1	s	B	H	L	K																		
XST40-250/92	40	65	100	225	312	255	65	20	20	180	260	210	314	254	14.5	350	445	840	110																		
XST40-250/110																																					
XST40-250/150																																					
XST50-200/92	50	65	100	220	310	255	65	20	20	160	260	210	314	254	14.5	350	445	882	110																		
XST50-200/110																																					
XST50-250/150																																					
XST50-250/185				225	323	280	70	22	-	20	180	304	254	314	254	349	279	14.5	350	445	923																
XST50-250/220																																					
XST65-160/92																						65	80	100	200	312	255	65	20	-	160	260	210	314	254	14.5	350
XST65-160/110																																					
XST65-160/150																																					
XST65-200/150	310	323	280	70	22	-	20	180	304	254	314	254	349	279	14.5	350	445	923																			
XST65-200/185																																					
XST65-200/220																																					
XST65-200K/185																																					
XST65-200K/220																																					
XST65-200K/300																																					
XST65-250/110	250	353	280	70	22	-	20	180	311	241	349	279	14.5	350	465	950																					
XST65-250/150																																					
XST65-250/220																																					
XST65-250/300																																					
XST65-250/370																																					
XST80-160/110																	80	100	125	225	315	255	65	20	-	160	260	210	314	254	14.5	350	425	869	130		
XST80-160/150																																					
XST80-160/185																																					
XST80-200/220																																					
XST80-200/300																																					
XST80-250/370																																					
XST80-250/450	280	386	335	75	28	-	20	225	393	311	431	356	18.5	450	560	1104				120																	
XST80-250/550																																					
XST80-160/110																																					
XST80-160/150																																					
XST80-160/185																																					
XST80-200/220																																					